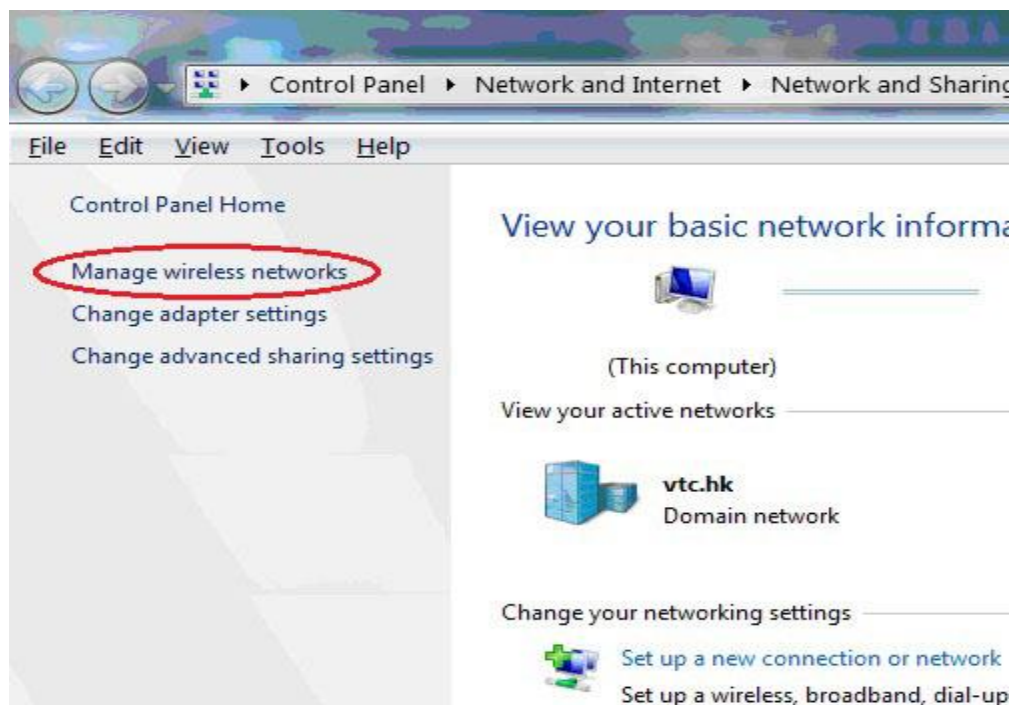


**Procedure to connect VTC-Student network for Windows 7**

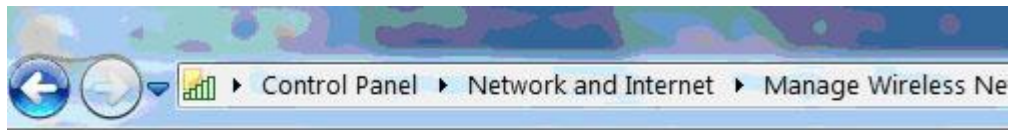
1. Click the "View network status and tasks" under "Control Panel".



2. Right-click the "Manage Wireless Network".

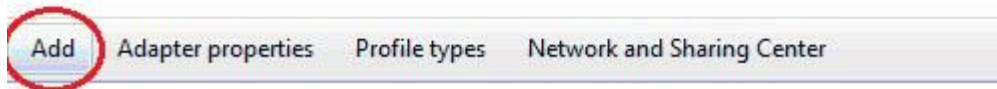


3. Click "Add" to add wireless network.

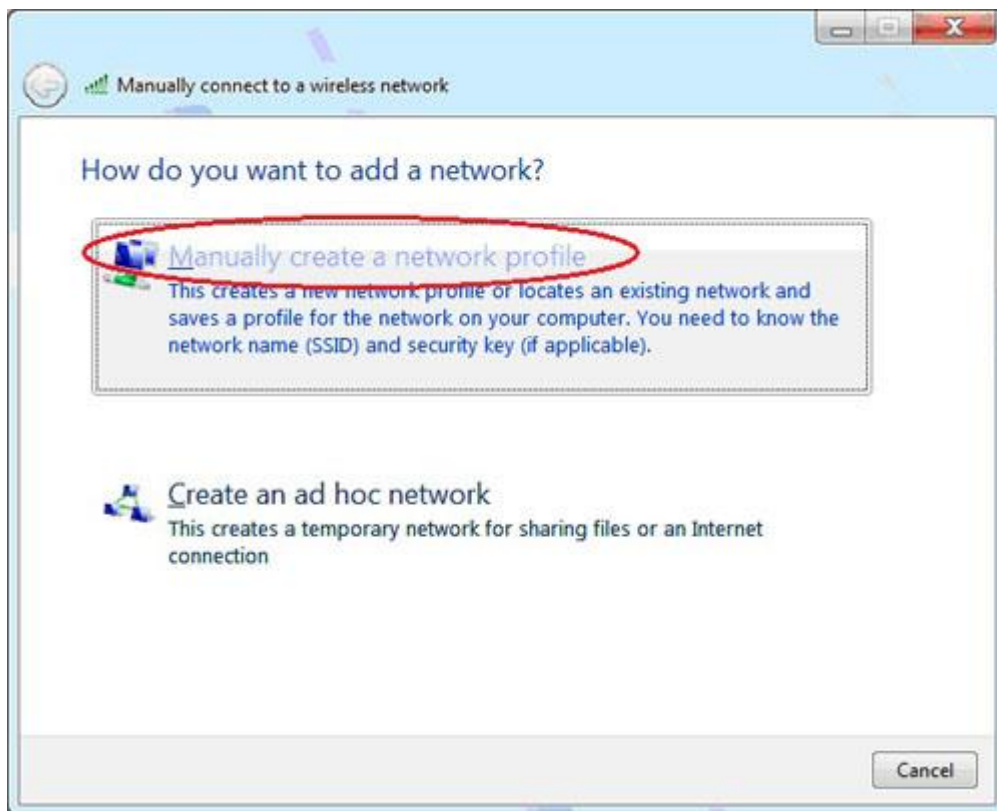


## Manage wireless networks that use (Wireless Network Conn

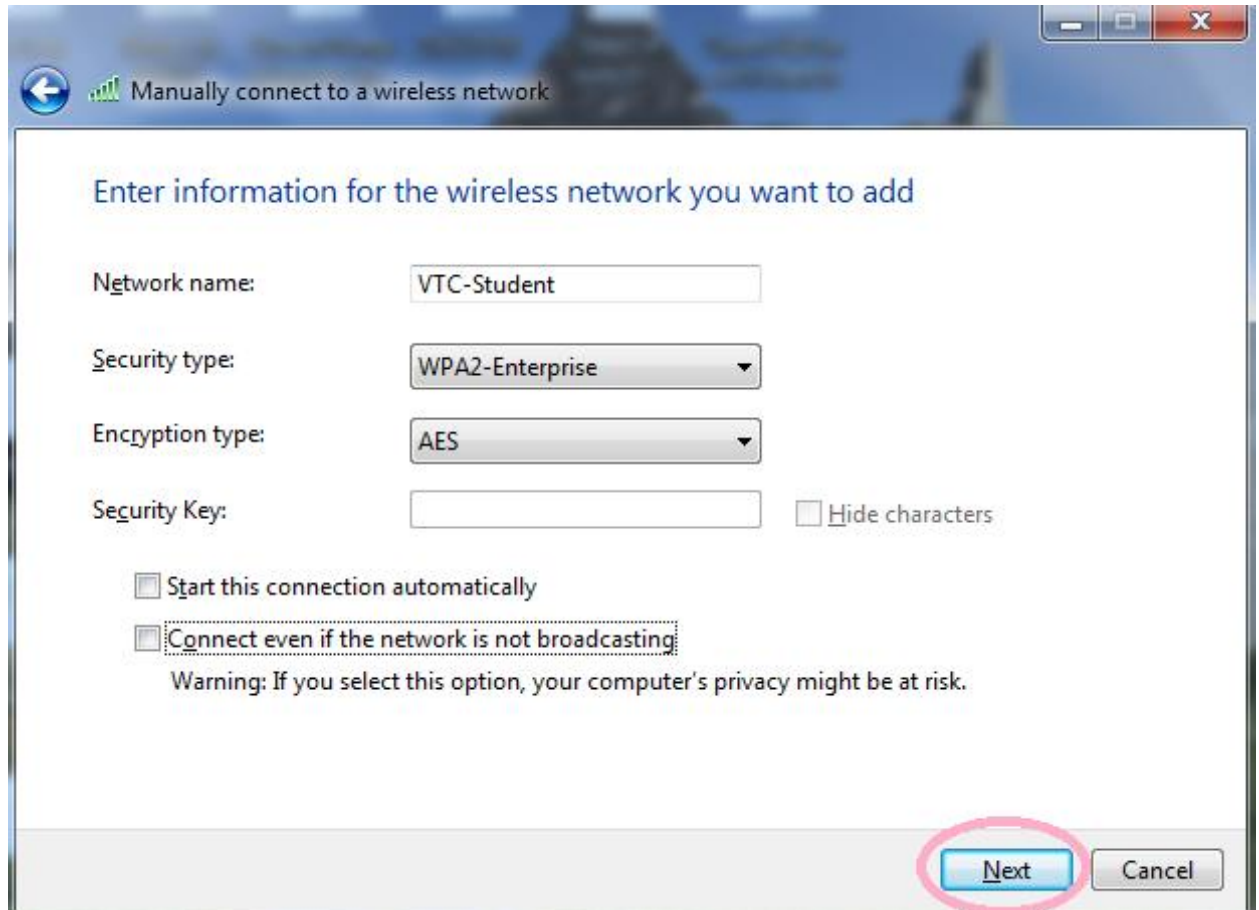
Windows tries to connect to these networks in the order listed below.



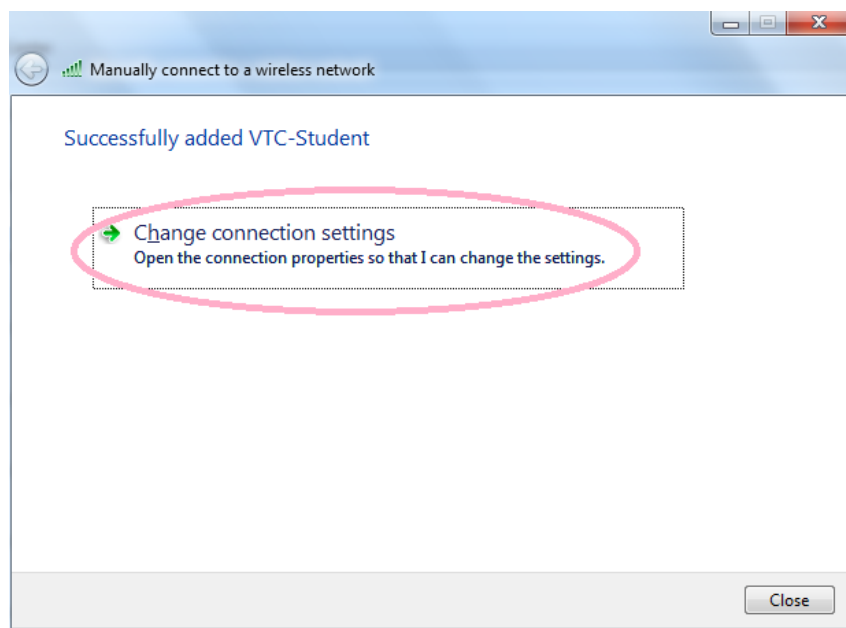
4. Click "Manually create a network profile" to continue.



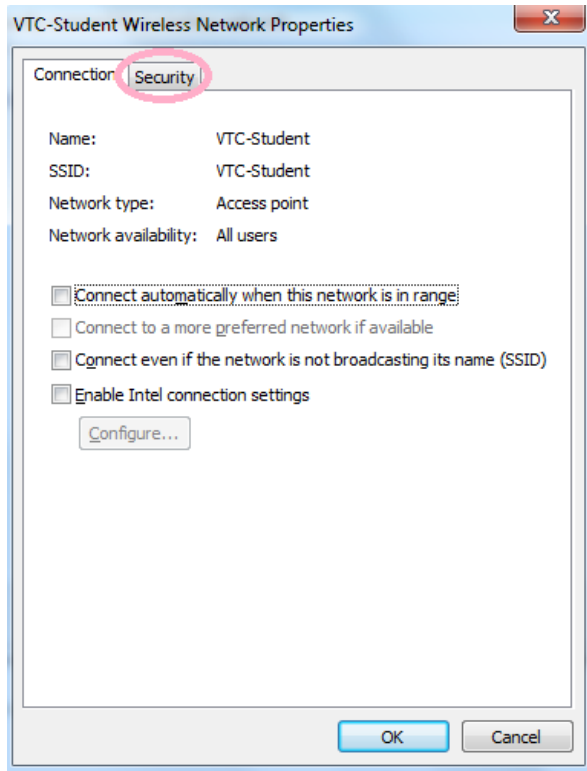
5. Type "VTC-Student" in the "Network name", select "WPA-Enterprise" and "AES" and uncheck "Start this connection automatically". Then click the "Next" to continue.



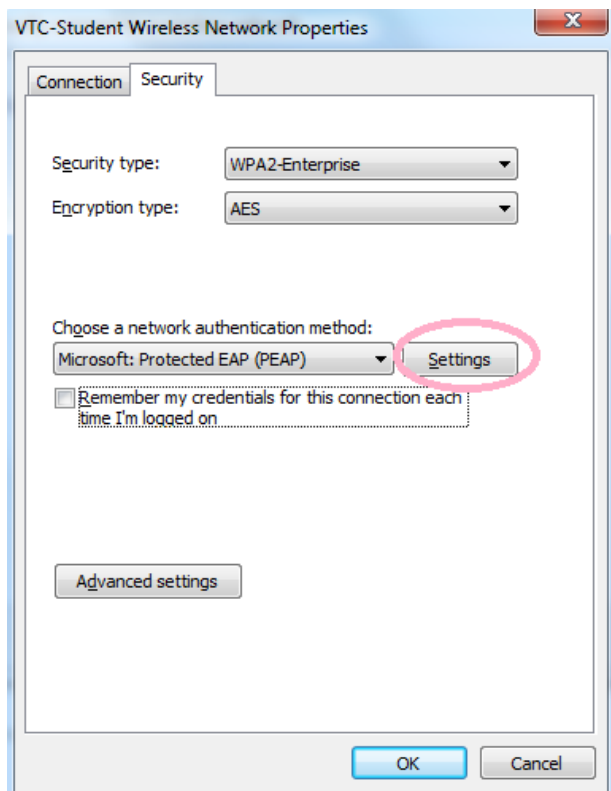
6. Click "Change connection settings."



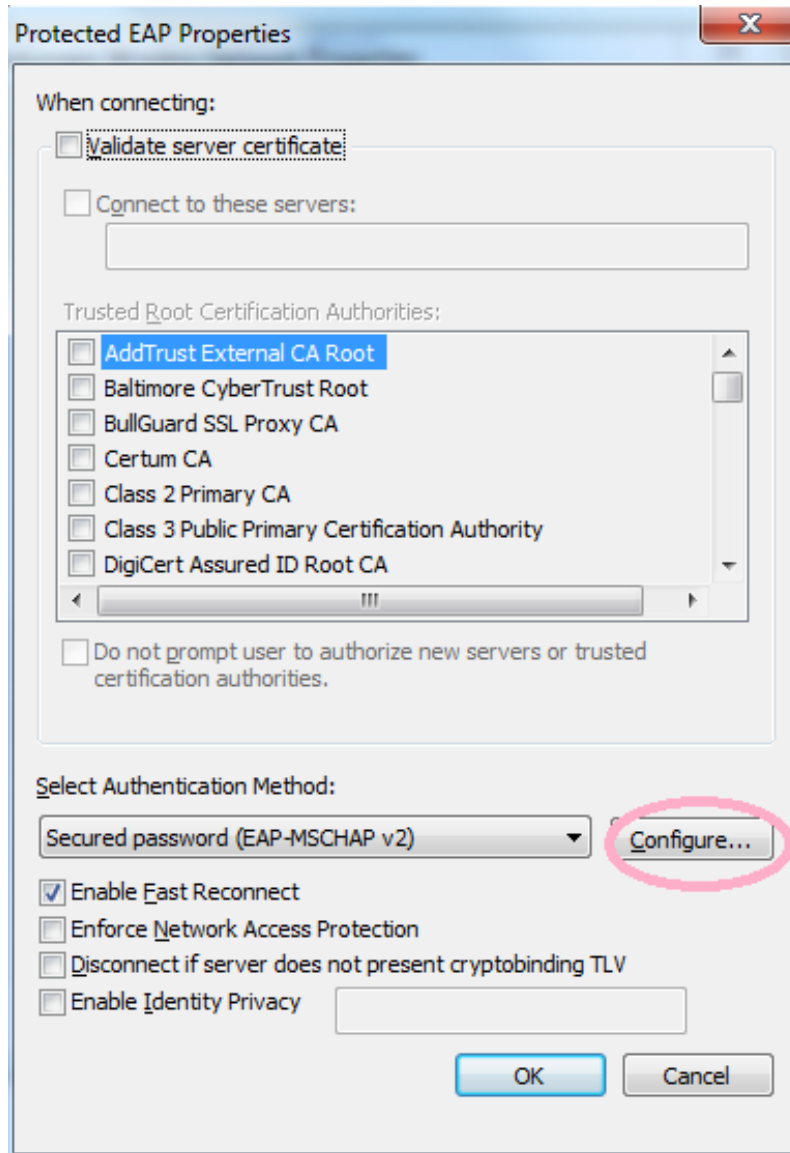
7. Select “Security” tab



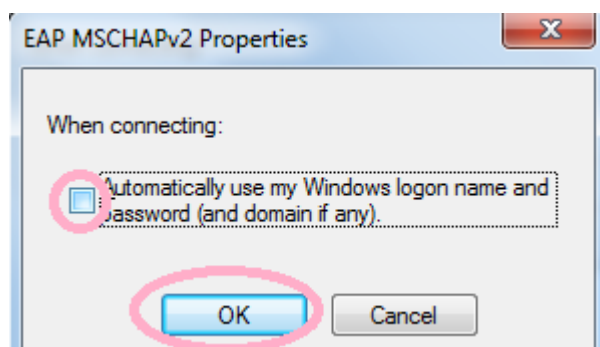
8. Uncheck “Remember my credentials for this connection each time I’m logged on” box. Then click the “Settings” to continue.



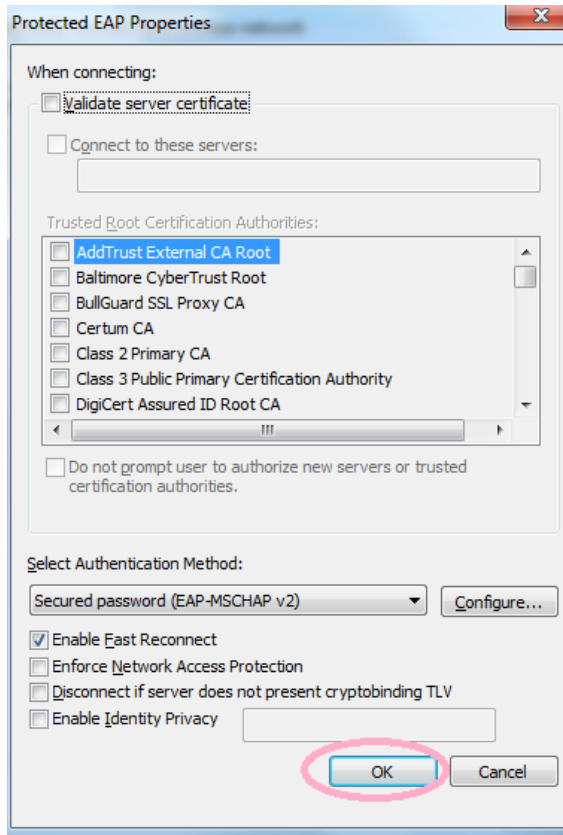
9. Uncheck “Validate server certificate” box, select “Secured Password (EAP-MACHAP v2)” and check the “Enable Fast Reconnect” box. Then click the “Configure...” to continue.



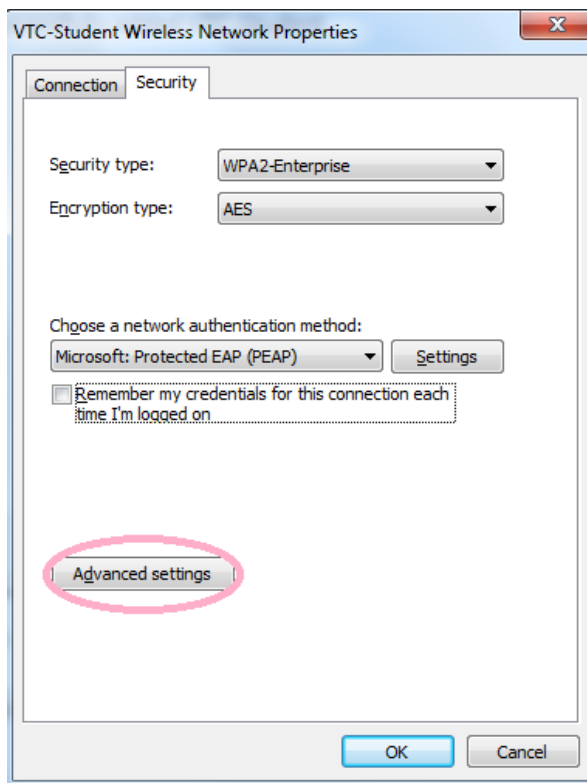
10. Uncheck the “Automatically use my Windows logon name and password (and domain if any)” box. Then click the “OK” to continue.



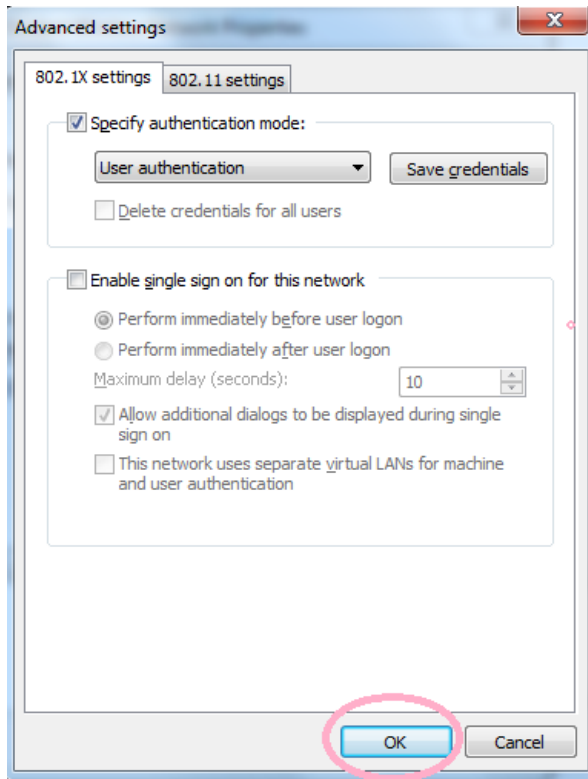
11. At the “Protected EAP Properties” window, click the “OK” to continue.



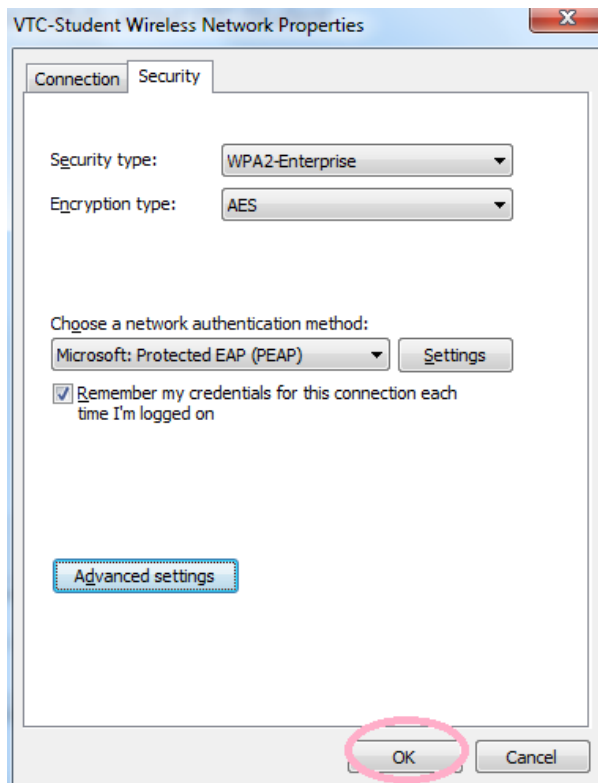
12. At the “VTC-Student Wireless Network Properties” window, click the “Advanced settings” to continue.



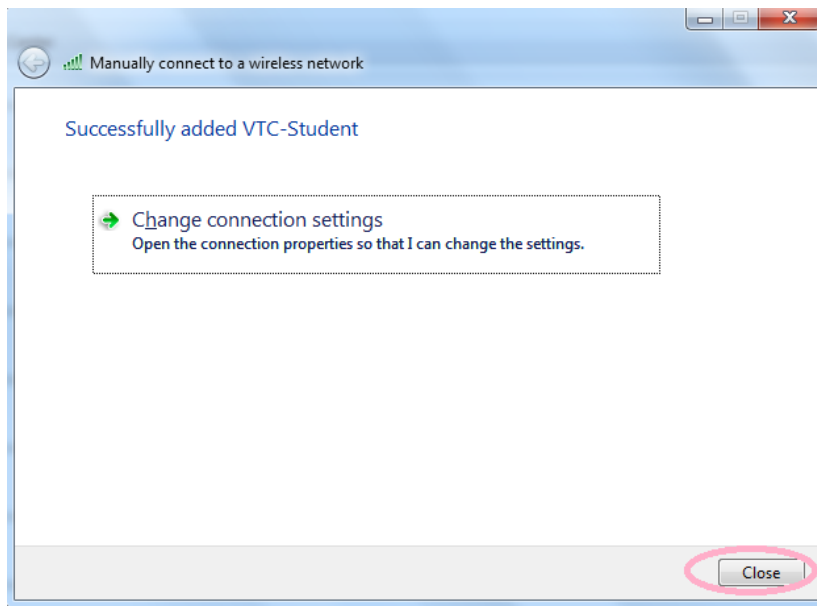
13. Check “Specify authentication mode” box and select “User authentication. Then click “OK” to continue.



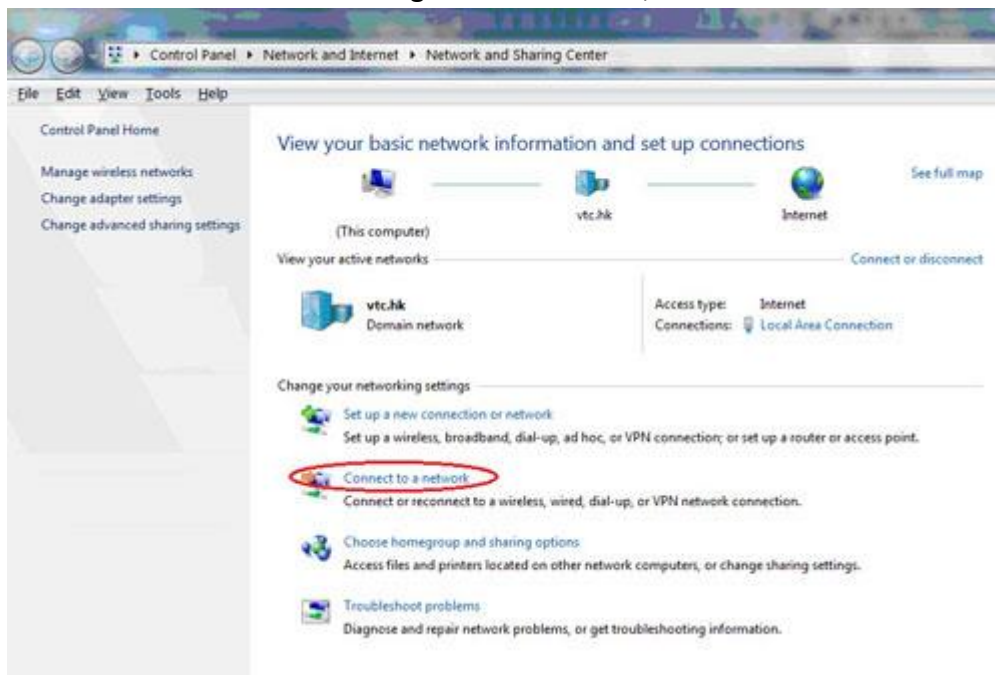
14. Click “OK” to continue.



15. Click “Close” to continue.



16. At the “Network and Sharing Center” window, click the “Connect to a network”.





17. "VTC-Student" will be found if it is in range. Double click "VTC-Student" to connect.



18. Enter your CNA username and password. Then click "OK".



19 If login is successful, "Connected" will be displayed.

