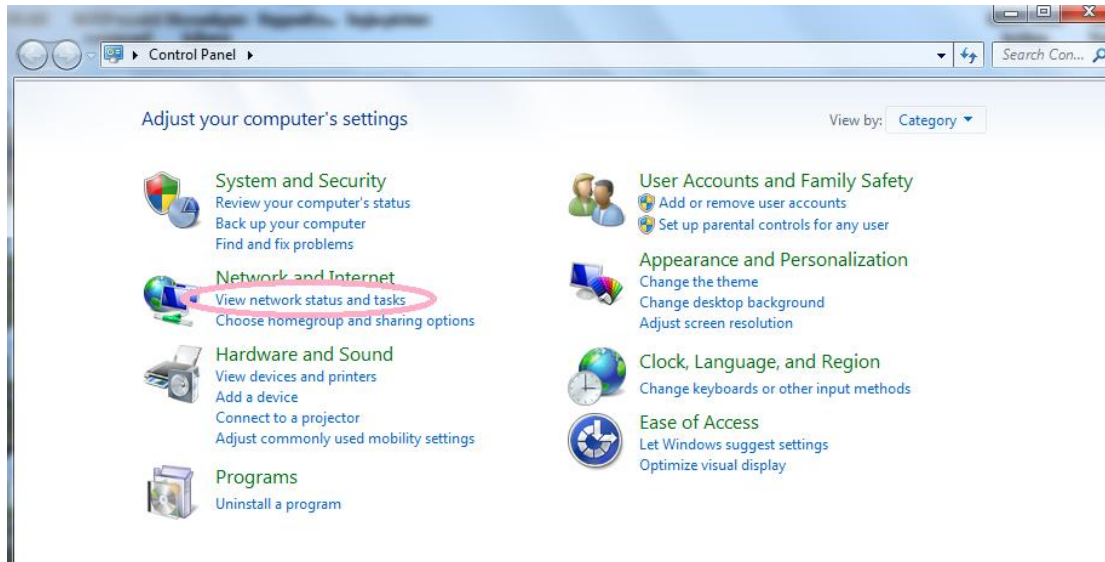
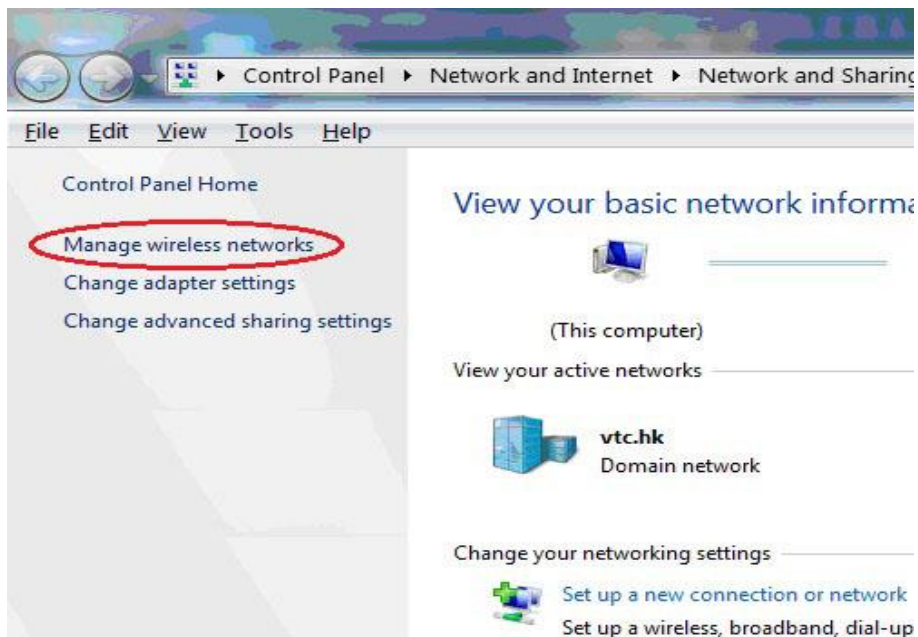


Procedure to connect eduroam wireless network for Windows 7

1. Click the “View network status and tasks” under “Control Panel”.



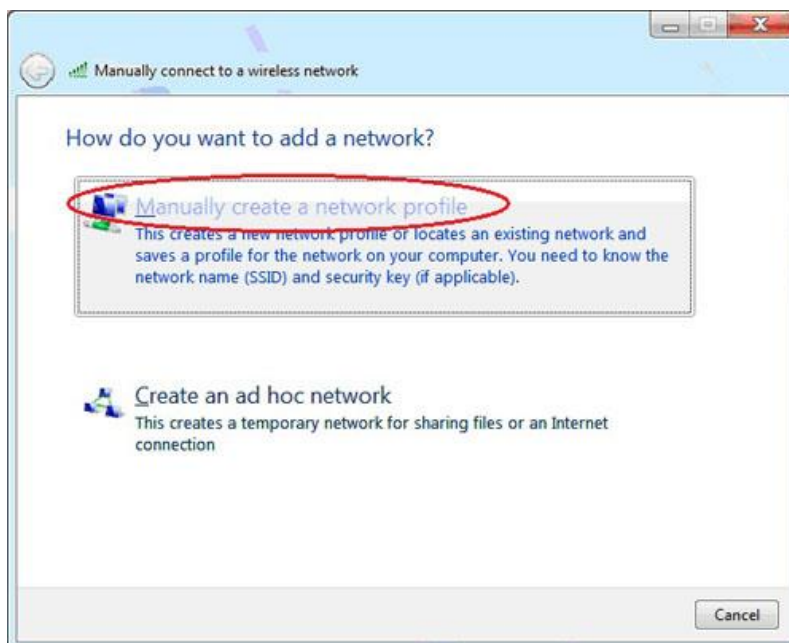
2. Click the “Manage Wireless Network”.



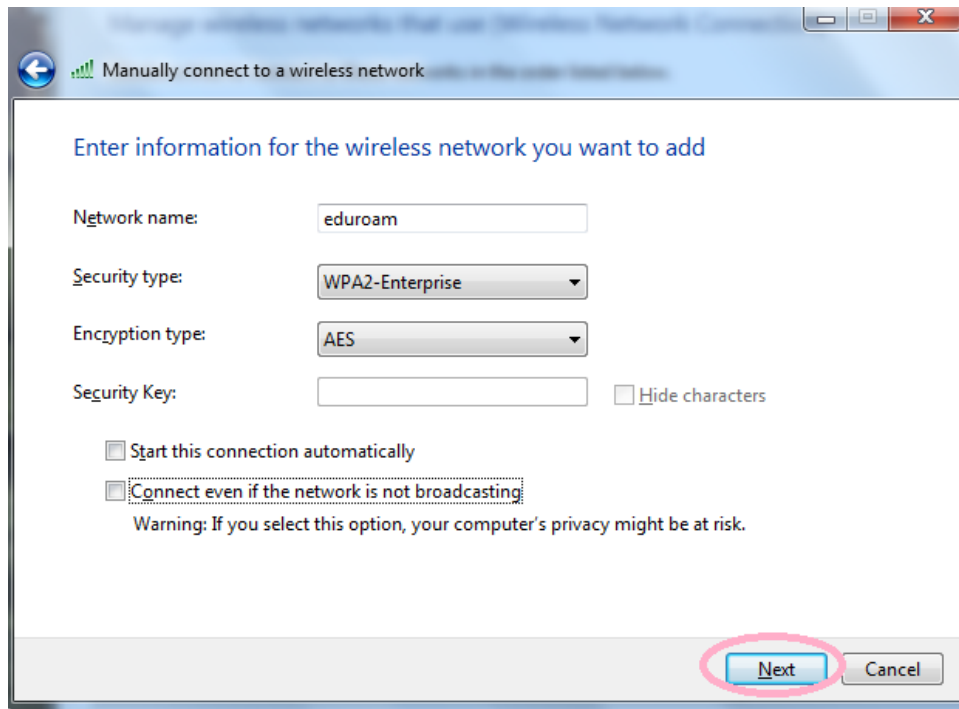
3. Click "Add" to add wireless network.



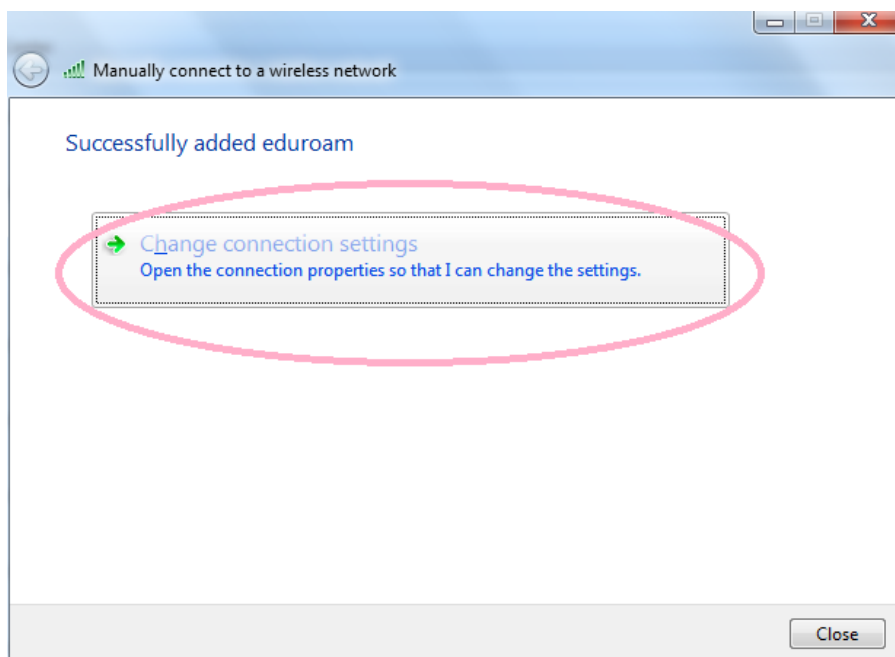
4. Click "Manually create a network profile" to continue.



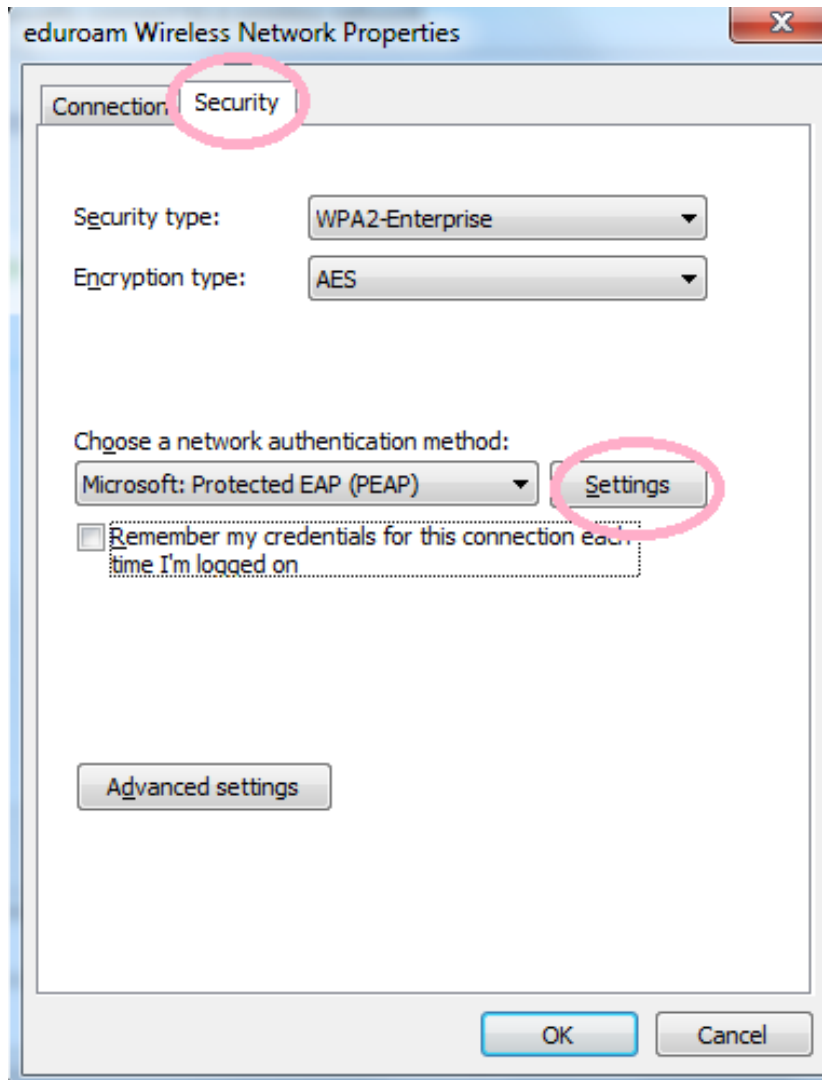
5. Type “eduroam” in the “Network name”, select “WPA2-Enterprise” and “AES” and uncheck “Start this connection automatically”. Then click the “Next” to continue.



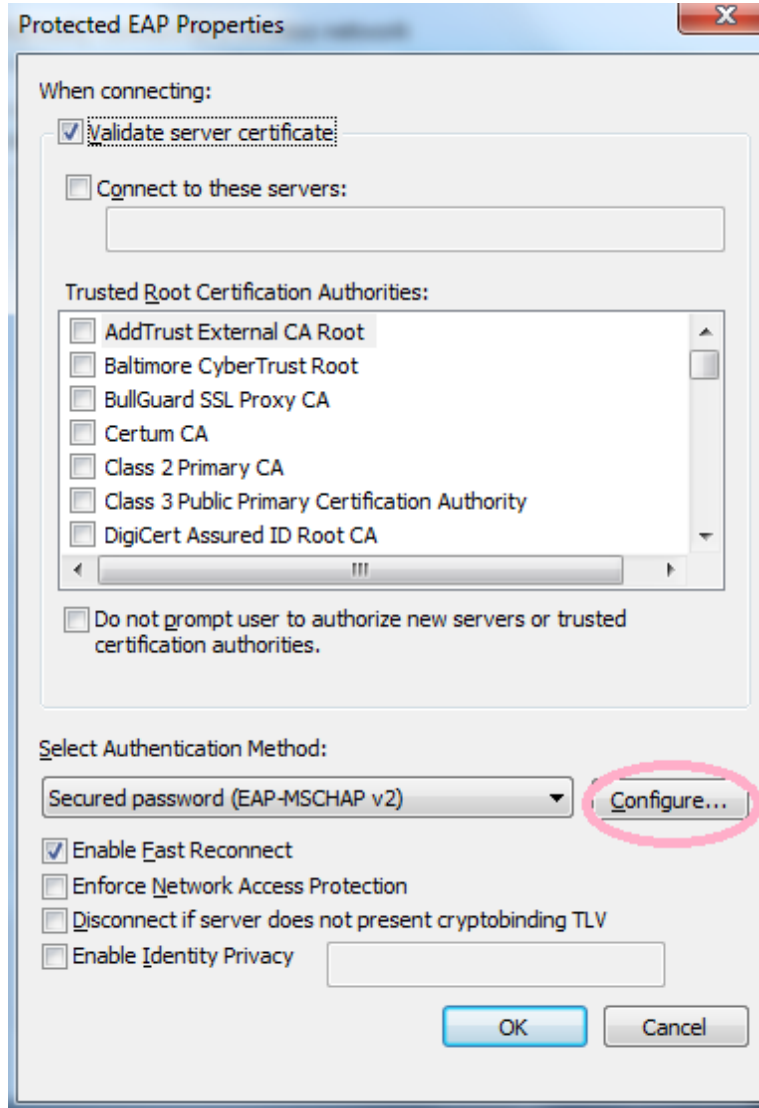
6. Click “Change connection settings”.



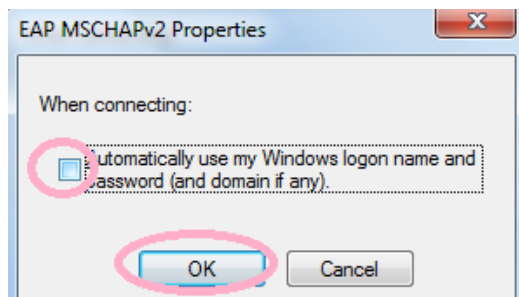
7. Select “Security” tab, uncheck “Remember my credentials for this connection each time I’m logged on” box. Then click the “Settings” to continue.



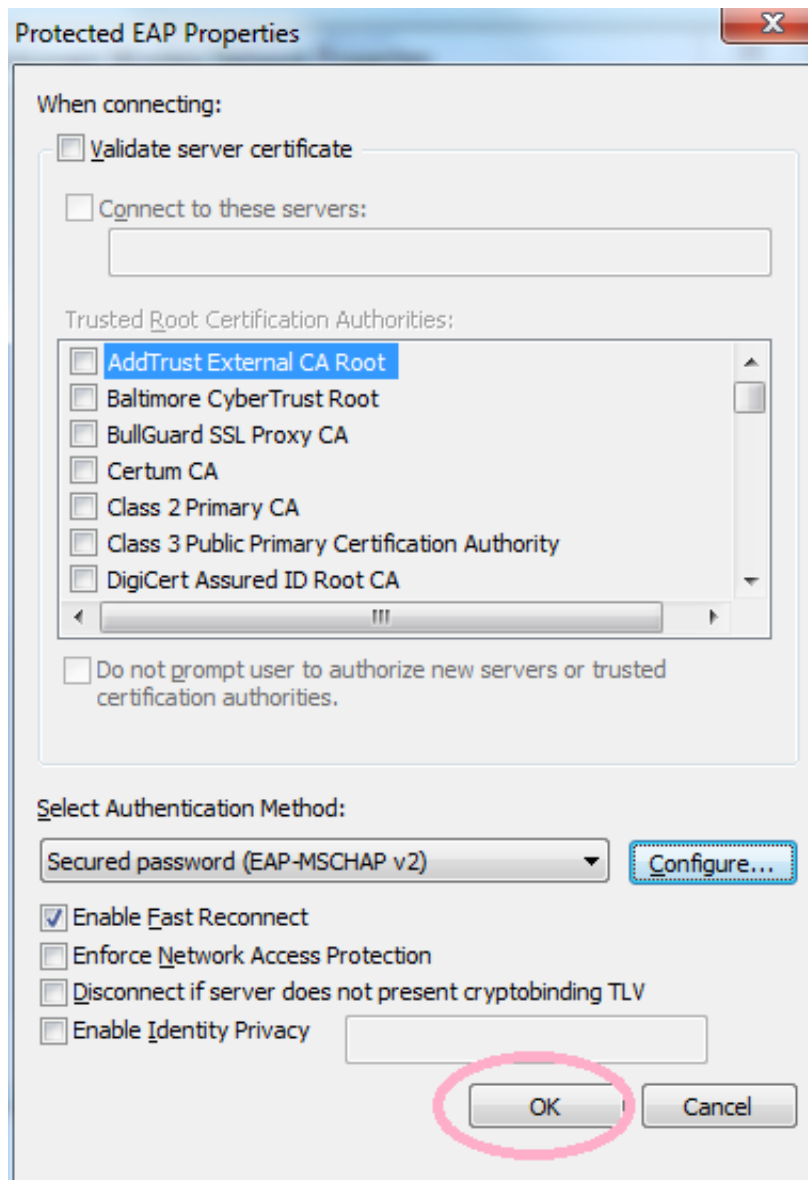
8. Enable “Validate server certificate” box, select “Secured Password (EAP-MACHAP v2)” and check the “Enable Fast Reconnect” box. Then click the “Configure...” to continue.



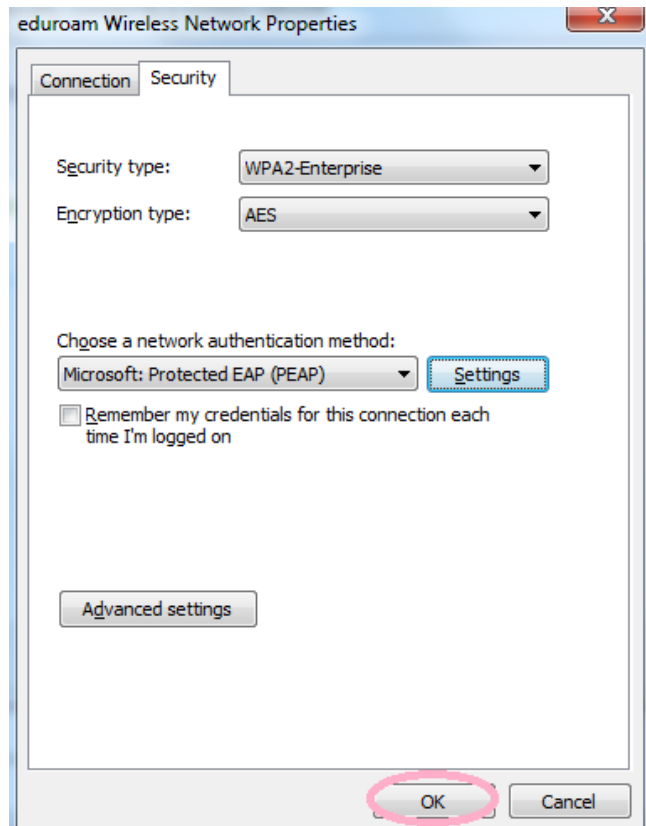
9. Uncheck the “Automatically use my Windows logon name and password (and domain if any)” box. Then click the “OK” to continue.



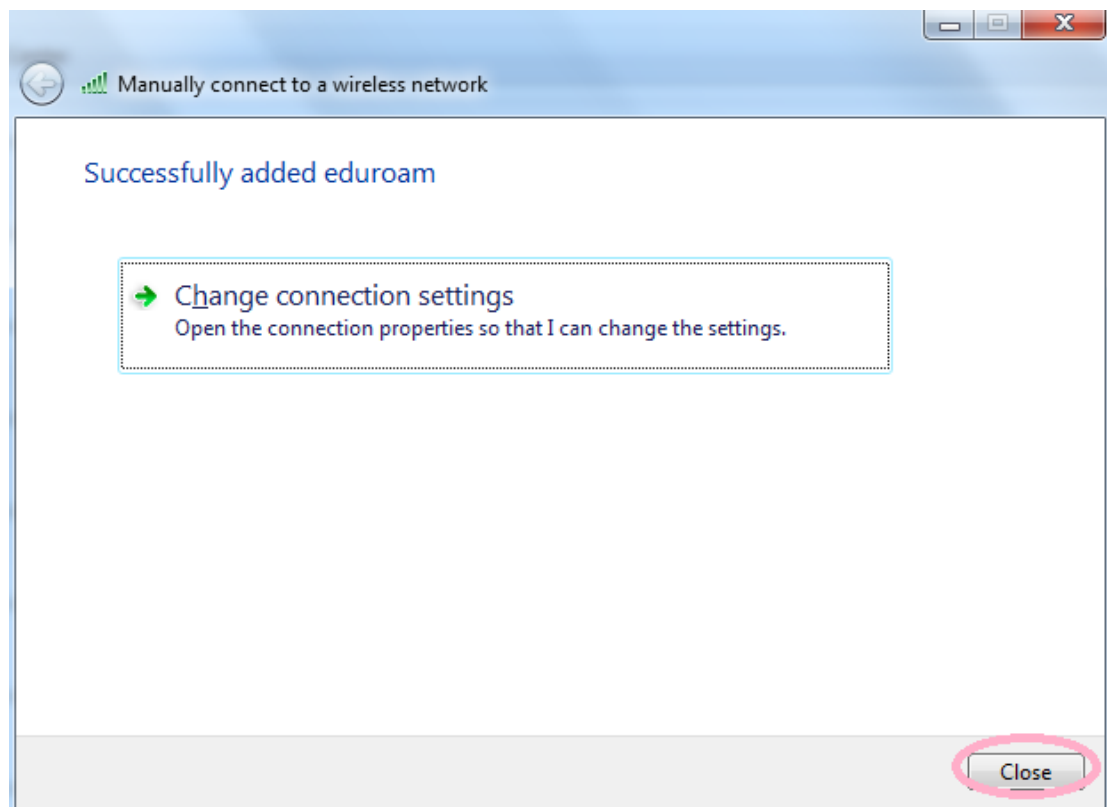
10. At the “Protected EAP Properties” window, click the “OK” to continue.



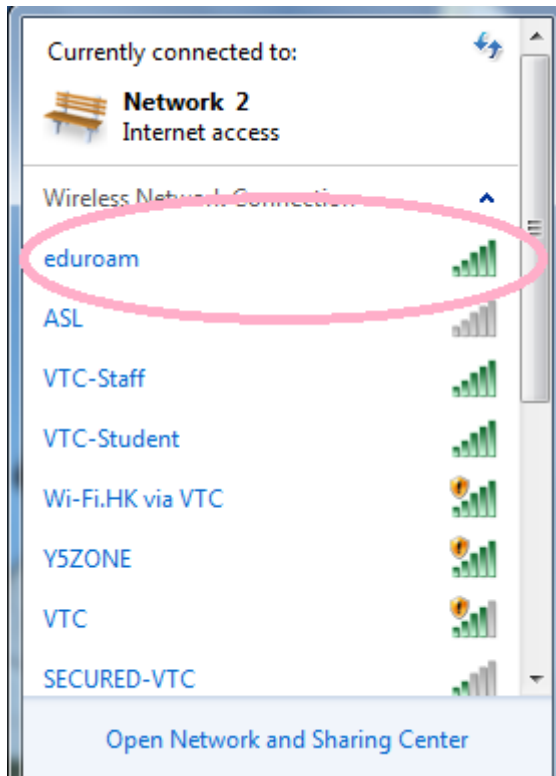
11. Click "OK" to continue.



12. Click "Close" to continue.



13. "eduroam" will be found if it in range. Double click "eduroam" to connect.



14. Login using your CNA account < CNA@vtc.edu.hk > and password.

15. At the "Confirm Server Certificate" Windows, Click "Confirm"

16." Connected" will be displayed. Now your notebook is connect to eduroam wireless network.