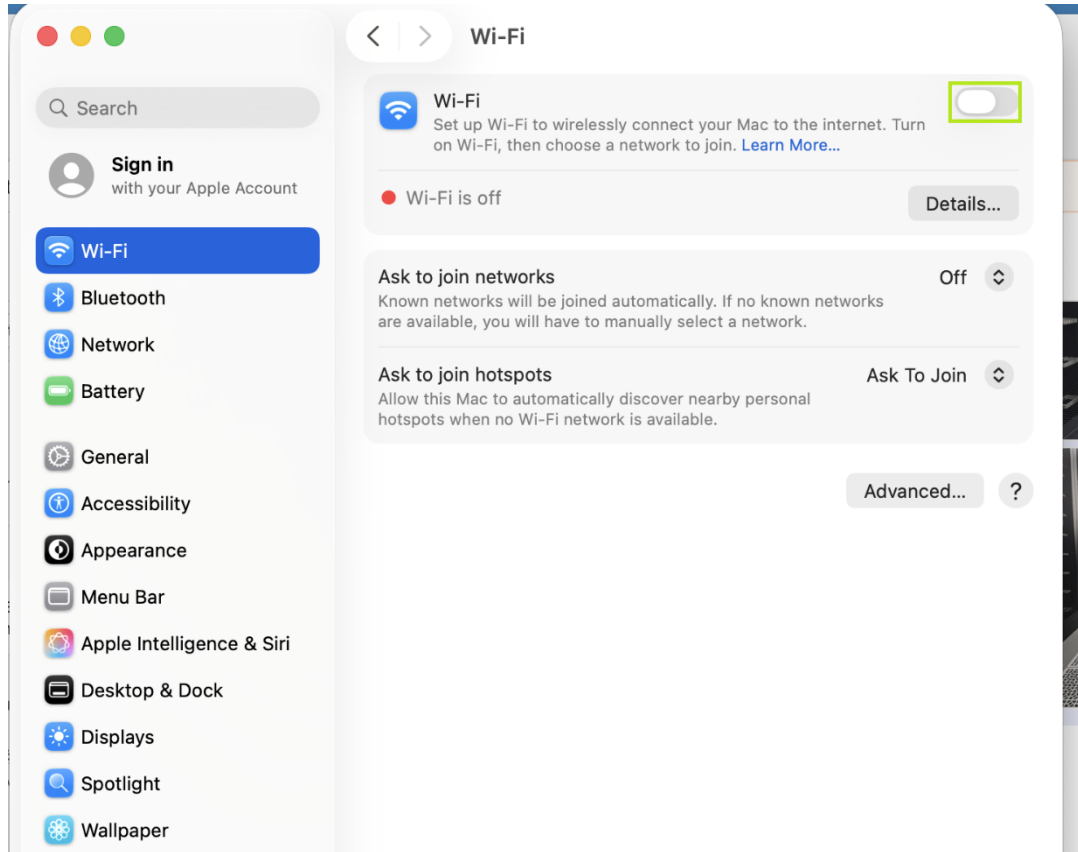


Wireless Connectivity Guide: VTC-Staff (macOS)

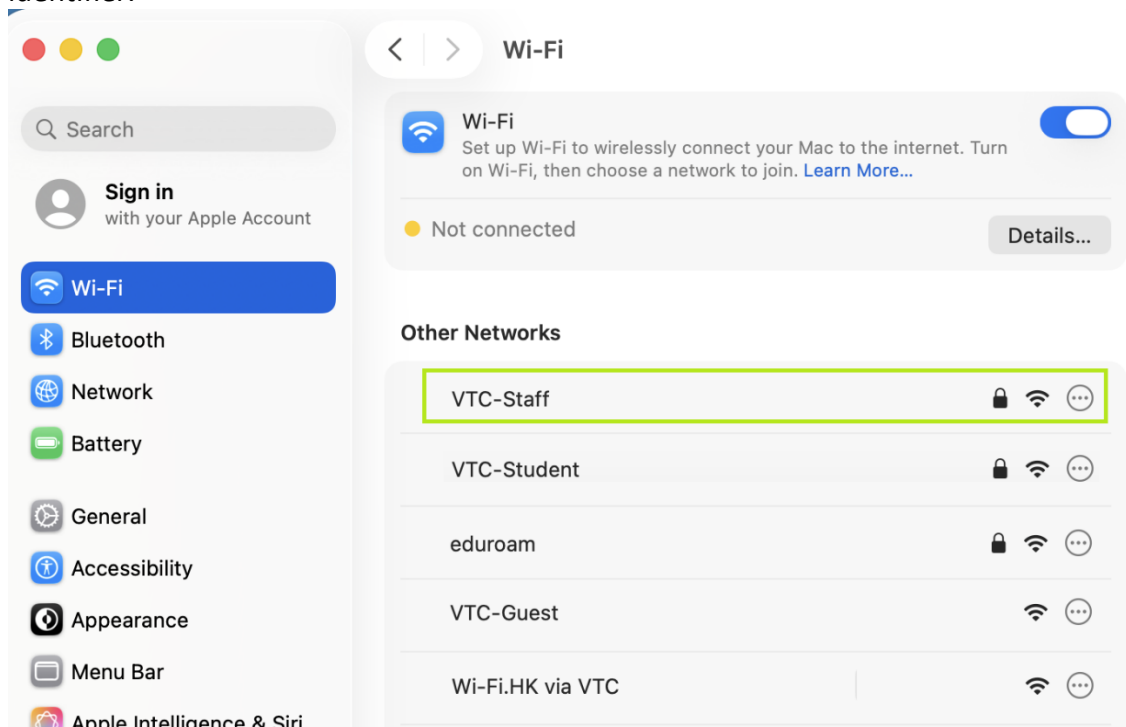
This document provides the standard operating procedure for establishing a secure connection to the **VTC-Staff** wireless network on macOS devices.

Phase 1: Network Initialization

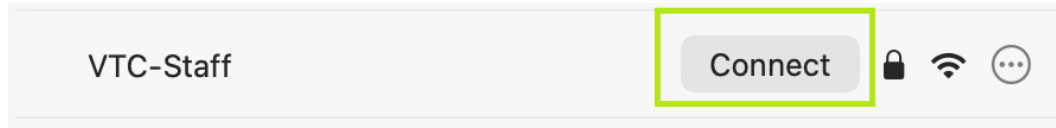
1. **Access System Settings:** Navigate to the **System Settings** menu and select the **Wi-Fi** tab from the sidebar.



2. **Enable Interface:** Ensure the Wi-Fi toggle is set to the **ON** position.
3. **SSID Selection:** Under the **Other Networks** section, locate the **VTC-Staff** service identifier.

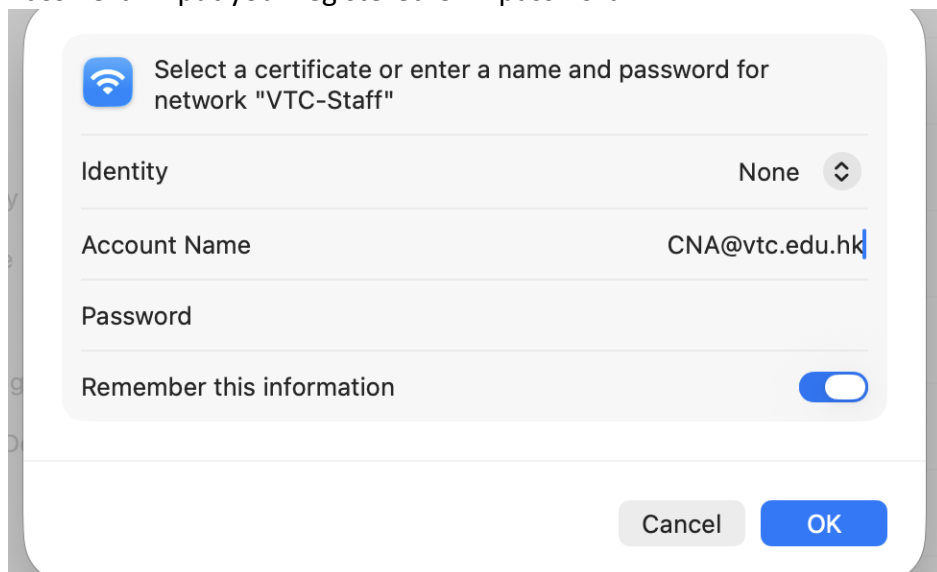


4. **Initiate Connection:** Click the **Connect** button associated with the **VTC-Staff** network.

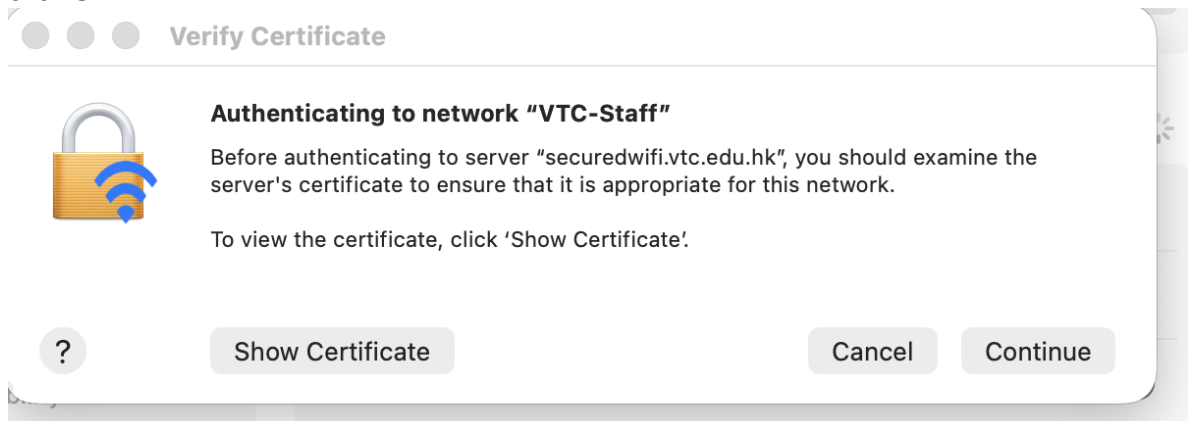


Phase 2: Authentication & Security Configuration

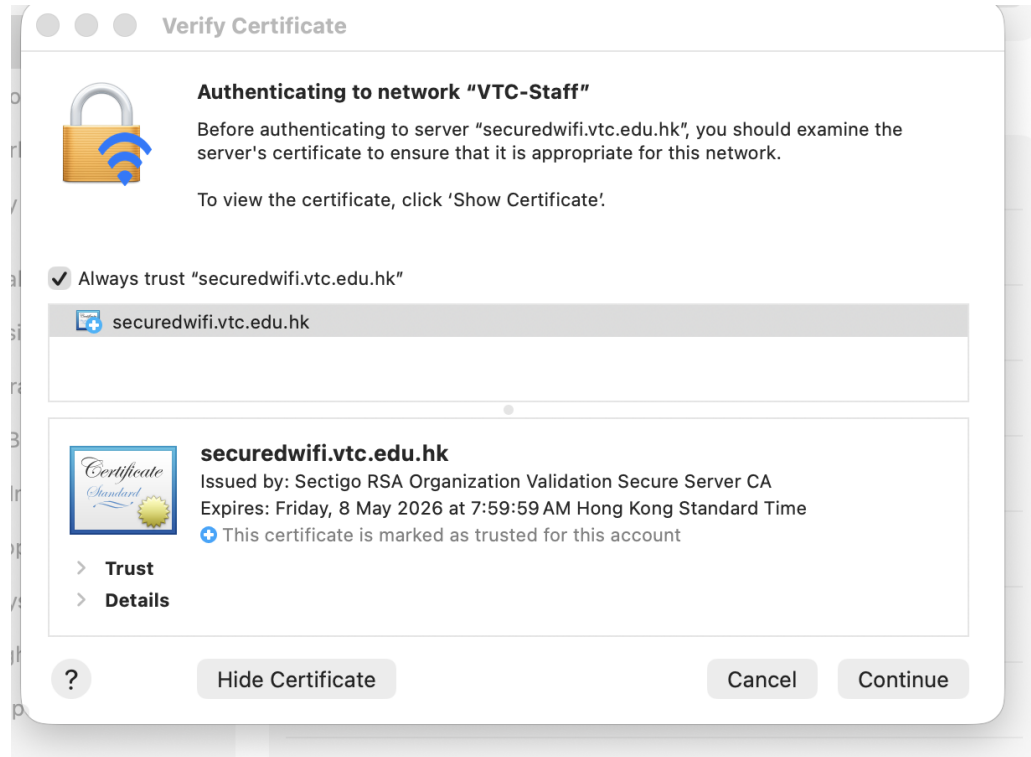
1. **Credential Entry:** When the authentication dialogue appears, provide your institutional credentials:
 - o **Account Name:** Input your full CNA identity (e.g., **CNA@vtc.edu.hk**).
 - o **Password:** Input your registered CNA password.



2. **Session Persistence:** Ensure the **Remember this information** toggle is enabled and click **OK**.

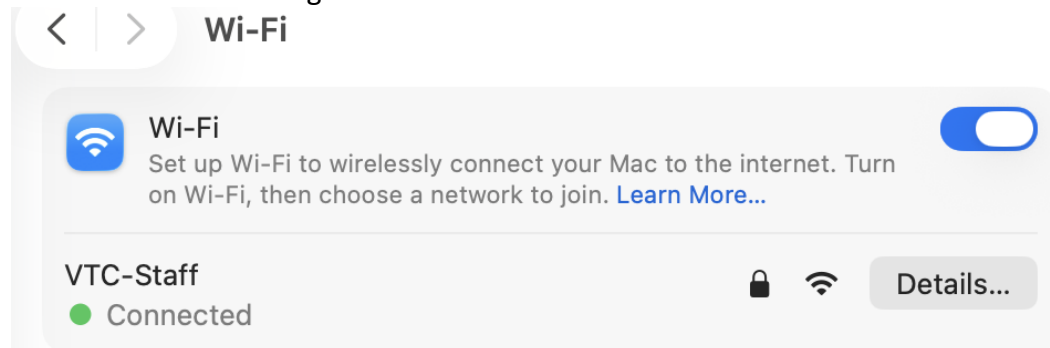


3. **Certificate Verification:** A **Verify Certificate** prompt will appear for the server **securedwifi.vtc.edu.hk**.
4. **Trust Assignment:** Click **Show Certificate** to expand the details. Check the box for **Always trust "securedwifi.vtc.edu.hk"** and click **Continue** to establish the encrypted tunnel.



Phase 3: Verification & Troubleshooting

1. **Connection Confirmation:** Upon successful authentication, **VTC-Staff** will appear in the Wi-Fi menu with a green indicator and the status **Connected**.



2. **Connection Failure Protocol:**
 - In the event of a connection failure, please attempt to **"Forget"** the network profile within the Wi-Fi settings to clear existing configuration data, then retry Phase 1.
 - If connectivity issues persist, please contact the **ITO Helpdesk** or your **Local Campus IT Support Team** for technical assistance.